



Zator
gluing solutions

other
components

2023





welcome



ZATOR SRL

Via Galvani, 11
20095 Cusano Milanino (MI)
Italy

Tel. +39 02 66403235

Fax +39 02 66403215

info@zator.it

www.zator.it

Index

OTHER COMPONENTS	7
optionals and spare parts	7
STAND STN SERIES	8
LEVEL CONTROLS	11
VALVES BRACKETS	11
GLUE DISTRIBUTOR	12
VALVE KIT	14
ENCODER	18
PHOTOCELLS	19
CABLES	20
PRESSURE REGULATOR	21
PIPES	22
FILTERS	24



OTHER COMPONENTS

optionals and spare parts

Zator's optionals and spare parts are those components that complete a typical glue, adhesive and fluid application/distribution system.

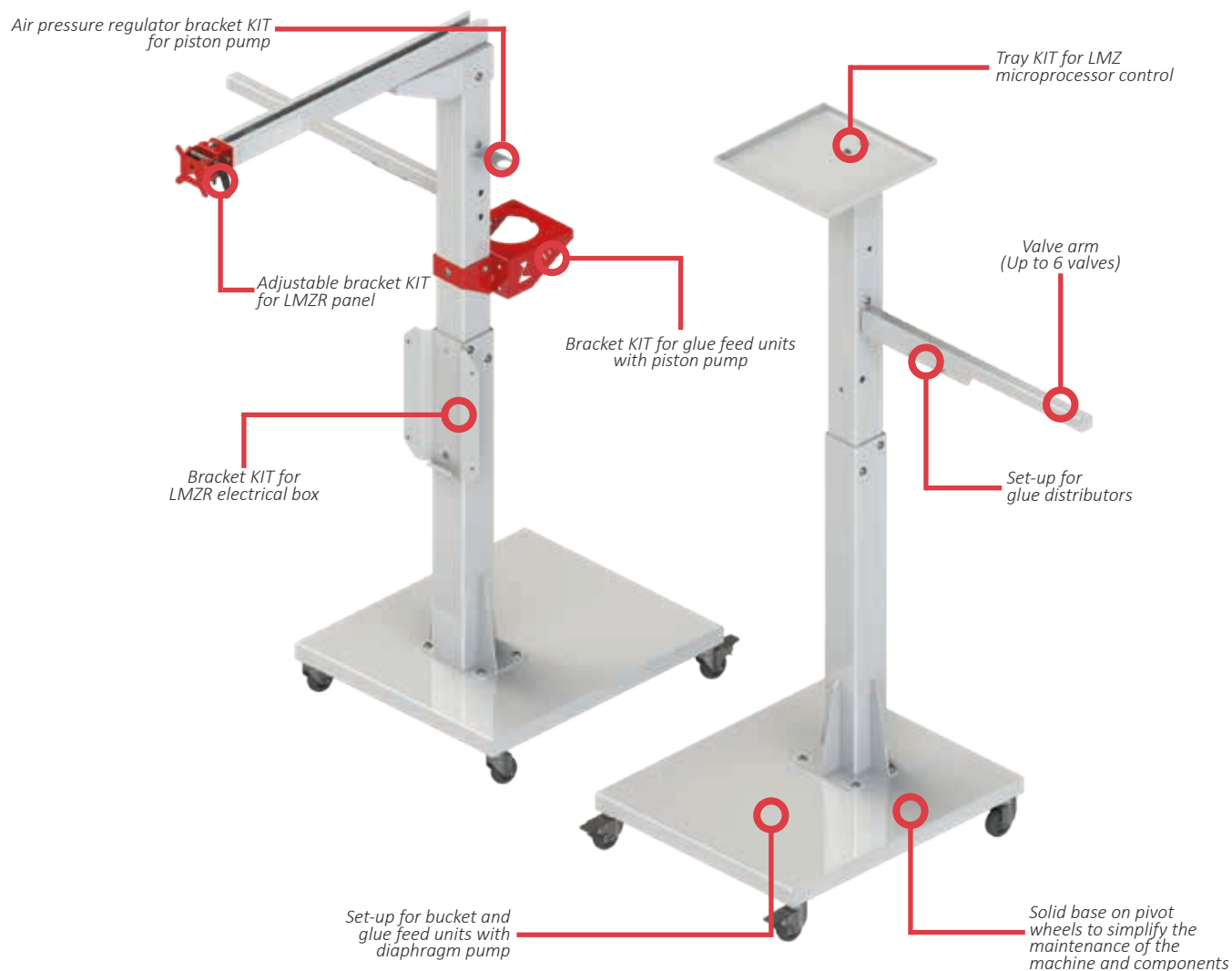
They are divided in optionals and spare parts for the supply and fluid control in the system and in optionals and spare parts for the electronic control of the solenoid valves.

OPTIONALS AND SPARE PARTS

stand and brackets for diaphragm and piston pumps	valve kit
brackets for control panel and microprocessor control	encoder
valve brackets	photocells
level controls	
glue distributors	

STAND STN SERIES

The stand of STN series has been designed specifically to adapt and integrate with the most folder-gluer machines and similar machines, giving a solid, safe and handy bracket system for adhesive, glue and fluid application components. The STN series can be equipped with different KIT available for the customer.



expandable arm

Cod. BRC00200



base kit

code	description	€
STN00100	Standard stand kit	

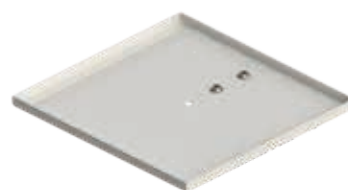


additional kit

code	description	€
TRY00100	Tray kit for stand STN00100	

TRY00200	Tray kit for arm BRC00100	
----------	---------------------------	--

BRC001330	Tray for LMZ microprocessor control	
-----------	-------------------------------------	--

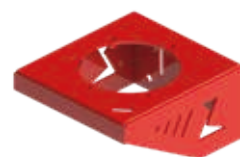


code	description	€
BRC00400	5:1 piston pump bracket kit for stand STN00100	

SP20001	5:1 piston pump wall mount bracket	
---------	------------------------------------	--

BRK001050	2:1 piston pump bracket kit for stand STN00100	
-----------	--	--

BRK001051	2:1 piston pump wall mount bracket	
-----------	------------------------------------	--



code	description	€
BRC00600	Air pressure regulator bracket kit	



code	description	€
BRC00300	Adjustable bracket kit for remote control panel	



code	description	€
BRC00100	Fixed arm kit for STN00100 Total length 680mm	



code	description	€
BRC00150	Expandable arm kit for STN00100 Total length from 950 to 1530mm	



code	description	€
BRC00200	Expandable arm kit with L support for remote control panel Total length from 950 to 1530mm	



code	description	€
BRC00500	Bracket kit for LMZ04R electrical box	
BRC00510	Bracket kit for LMZ08R electrical box	



LEVEL CONTROLS

code	description	€
A19910000	Float level sensor kit	
KCN001435	Level signal lamp kit with 5m cable	
KCN001445	Level signal lamp kit with bracket and 5m cable	



VALVES BRACKETS

codice	descrizione	€
H89300100	Valve bracket kit DLK22 bar 45 mm	
H89300400	Valve bracket kit DLK22 bar 20-32 mm	
BRK001352	Valve bracket kit VH2 bar 45 mm	
BRK001351	Valve bracket kit VH2 bar 20-32 mm	
H89300601	Valve bracket kit M5 bar 45 mm	
H89300600	Valve bracket kit M5 bar 20-32 mm	
BRK001371	Valve bracket kit Ø12 mm bar 45 mm	
BRK001370	Valve bracket kit Ø12 mm bar 20-32 mm	
H89300701	Valve bracket kit M6 bar 45 mm	
H89300700	Valve bracket kit M6 bar 20-32 mm	
BRK001391	Valve bracket kit M18 bar 45 mm	
BRK001390	Valve bracket kit M18 bar 20-32 mm	
H89335200	Photocell bracket M6	



GLUE DISTRIBUTOR

low pressure glue distributors

code	description	€
MFDL20200	Stainless steel glue distributor Low pressure Ball valve Exhaust valve 1 pipe inlet Ø10 2 pipe outlet Ø8	



code	description	€
MFDL30200	Stainless steel glue distributor Low pressure Ball valve Exhaust valve 1 pipe inlet Ø10 3 pipe outlet Ø8	



code	description	€
MFDL40200	Stainless steel glue distributor Low pressure Ball valve Exhaust valve 1 pipe inlet Ø10 4 pipe outlet Ø8	



code	description	€
MFDL60200	Stainless steel glue distributor Low pressure Ball valve Exhaust valve 1 pipe inlet Ø10 6 pipe outlet Ø8	

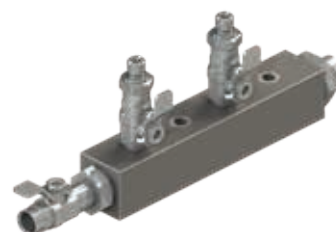


code	description	€
MFDL80200	Stainless steel glue distributor Low pressure Ball valve Exhaust valve 1 pipe inlet Ø10 8 pipe outlet Ø8	

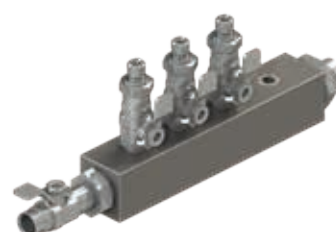


low pressure glue distributors

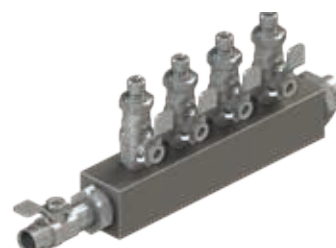
code	description	€
MFDH20100	Stainless steel glue distributor High pressure Ball valve - Exhaust valve 1 inlet G3/8 - 2 outlet G1/8	
MFDH20200	Stainless steel glue distributor High pressure Ball valve - Exhaust valve 1 inlet G3/8 - 2 outlet G1/4	



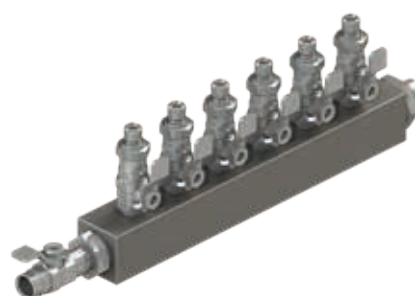
code	description	€
MFDH30100	Stainless steel glue distributor High pressure Ball valve - Exhaust valve 1 inlet G3/8 - 3 outlet G1/8	
MFDH30200	Stainless steel glue distributor High pressure Ball valve - Exhaust valve 1 inlet G3/8 - 3 outlet G1/4	



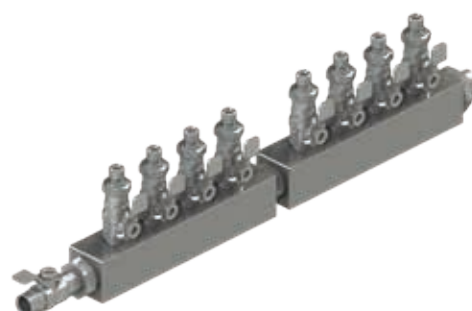
code	description	€
MFDH40100	Stainless steel glue distributor High pressure Ball valve - Exhaust valve 1 inlet G3/8 - 4 outlet G1/8	
MFDH40200	Stainless steel glue distributor High pressure Ball valve - Exhaust valve 1 inlet G3/8 - 4 outlet G1/4	



code	description	€
MFDH60100	Stainless steel glue distributor High pressure Ball valve - Exhaust valve 1 inlet G3/8 - 6 outlet G1/8	
MFDH60200	Stainless steel glue distributor High pressure Ball valve - Exhaust valve 1 inlet G3/8 - 6 outlet G1/4	



code	description	€
MFDH80100	Stainless steel glue distributor High pressure Ball valve - Exhaust valve 1 inlet G3/8 - 8 outlet G1/8	
MFDH80200	Stainless steel glue distributor High pressure Ball valve - Exhaust valve 1 inlet G3/8 - 8 outlet G1/4	



VALVE KIT

low pressure valve connection kit

code	description	€
KCN002002	Low pressure valve connection kit L=2mt for DLK16 - VH2	
KCN002003	Low pressure valve connection kit L=3mt for DLK16- VH2	
KCN002004	Low pressure valve connection kit L=4mt for DLK16 - VH2	
KCN002005	Low pressure valve connection kit L=5mt for DLK16 -VH2	
KCN000102	Low pressure valve connection kit L=2mt for DLK22	
KCN000103	Low pressure valve connection kit L=3mt for DLK22	
KCN000104	Low pressure valve connection kit L=4mt for DLK22	
KCN000105	Low pressure valve connection kit L=5mt for DLK22	
KCN000162	Low pressure valve connection kit L=2mt for DLK22S	
KCN000163	Low pressure valve connection kit L=3mt for DLK22S	
KCN000164	Low pressure valve connection kit L=4mt for DLK22S	
KCN000165	Low pressure valve connection kit L=5mt for DLK22S	



On request it is possible to have lengths greater than those indicated.

code	description	€
KCN000402	Low pressure valve connection kit L=2mt for MZK- MZD- MZL	
KCN000403	Low pressure valve connection kit L=3mt for MZK- MZD- MZL	
KCN000404	Low pressure valve connection kit L=4mt for MZK- MZD- MZL	
KCN000405	Low pressure valve connection kit L=5mt for MZK- MZD- MZL	
KCN000302	Low pressure valve connection kit L=2mt for MZS	
KCN000303	Low pressure valve connection kit L=3mt for MZS	
KCN000304	Low pressure valve connection kit L=4mt for MZS	
KCN000305	Low pressure valve connection kit L=5mt for MZS	
KCN004002	Low pressure valve connection kit L=2mt for MK1	
KCN004003	Low pressure valve connection kit L=3mt for MK1	
KCN004004	Low pressure valve connection kit L=4mt for MK1	
KCN004005	Low pressure valve connection kit L=5mt for MK1	



On request it is possible to have lengths greater than those indicated.

G1/8 high pressure valve connection kit

code	description	€
KCN002012	G1/8 high pressure valve connection kit L=2mt for VH2	
KCN002013	G1/8 high pressure valve connection kit L=3mt for VH2	
KCN002014	G1/8 high pressure valve connection kit L=4mt for VH2	
KCN002015	G1/8 high pressure valve connection kit L=5mt for VH2	
KCN000112	G1/8 high pressure valve connection kit L=2mt for DLK22	
KCN000113	G1/8 high pressure valve connection kit L=3mt for DLK22	
KCN000114	G1/8 high pressure valve connection kit L=4mt for DLK22	
KCN000115	G1/8 high pressure valve connection kit L=5mt for DLK22	
KCN000412	G1/8 high pressure valve connection kit L=2mt for MZK- MZD- MZL	
KCN000413	G1/8 high pressure valve connection kit L=3mt for MZK- MZD- MZL	
KCN000414	G1/8 high pressure valve connection kit L=4mt for MZK- MZD- MZL	
KCN000415	G1/8 high pressure valve connection kit L=5mt for MZK- MZD- MZL	
KCN004012	G1/8 high pressure valve connection kit L=2mt for MK1	
KCN004013	G1/8 high pressure valve connection kit L=3mt for MK1	
KCN004014	G1/8 high pressure valve connection kit L=4mt for MK1	
KCN004015	G1/8 high pressure valve connection kit L=5mt for MK1	



On request it is possible to have lengths greater than those indicated.

G1/4 high pressure valve connection kit

code	description	€
KCN002022	G1/4 high pressure valve connection kit L=2mt for VH2	
KCN002023	G1/4 high pressure valve connection kit L=3mt for VH2	
KCN002024	G1/4 high pressure valve connection kit L=4mt for VH2	
KCN002025	G1/4 high pressure valve connection kit L=5mt for VH2	
KCN000122	G1/4 high pressure valve connection kit L=2mt for DLK22	
KCN000123	G1/4 high pressure valve connection kit L=3mt for DLK22	
KCN000124	G1/4 high pressure valve connection kit L=4mt for DLK22	
KCN000125	G1/4 high pressure valve connection kit L=5mt for DLK22	
KCN000422	G1/4 high pressure valve connection kit L=2mt for MZK- MZD- MZL	
KCN000423	G1/4 high pressure valve connection kit L=3mt for MZK- MZD- MZL	
KCN000424	G1/4 high pressure valve connection kit L=4mt for MZK- MZD- MZL	
KCN000425	G1/4 high pressure valve connection kit L=5mt for MZK- MZD- MZL	
KCN004022	G1/4 high pressure valve connection kit L=2mt for MK1	
KCN004023	G1/4 high pressure valve connection kit L=3mt for MK1	
KCN004024	G1/4 high pressure valve connection kit L=4mt for MK1	
KCN004025	G1/4 high pressure valve connection kit L=5mt for MK1	



On request it is possible to have lengths greater than those indicated.

ENCODER

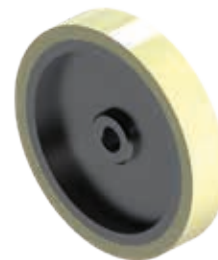
code	description	€
NCD641000	Encoder 1000 imp/rev	



code	description	€
BRC001450	Encoder support bracket	



code	description	€
SFG001450	Encoder pulley	



code	description	€
K96313194	Encoder kit: encoder 1000 imp/rev bracket pulley	



PHOTOCELLS

code	description	€
KCN001400	Photocell kit reflex PNP high speed Ø6 with cable L=5mt	



code	description	€
KCN001415	Photocell kit reflex PNP high speed Ø6 with cable L=5mt	



code	description	€
KCN001425	Inductive PNP sensor kit Ø12 with cable L=5mt	



On request it is possible to have lengths greater than those indicated.

CABLES

code	description	€
WCB325002	Valve connection cable L=2mt for DLK16- VH2	
WCB325003	Valve connection cable L=3mt for DLK16- VH2	
WCB325004	Valve connection cable L=4mt for DLK16- VH2	
WCB325005	Valve connection cable L=5mt for DLK16- VH2	

WCB322102	Valve connection cable L=2mt for DLK22	
WCB322103	Valve connection cable L=3mt for DLK22	
WCB322104	Valve connection cable L=4mt for DLK22	
WCB322105	Valve connection cable L=5mt for DLK22	

WCB322002	Valve connection cable L=2mt for MZK- MZD- MZL-MZS	
WCB322003	Valve connection cable L=3mt for MZK- MZD- MZL-MZS	
WCB322004	Valve connection cable L=4mt for MZK- MZD- MZL-MZS	
WCB322005	Valve connection cable L=5mt for MZK- MZD- MZL-MZS	

WCB322502	Valve connection cable L=2mt for MK1	
WCB322503	Valve connection cable L=3mt for MK1	
WCB322504	Valve connection cable L=4mt for MK1	
WCB322505	Valve connection cable L=5mt for MK1	

code	description	€
WCB323303	Encoder connection cable L=3mt	
WCB323305	Encoder connection cable L=5mt	
WCB32330A	Encoder connection cable L=10mt	

code	description	€
WCB314003	Proportional valve connection cable L=3mt	
WCB314005	Proportional valve connection cable L=5mt	



On request it is possible to have lengths greater than those indicated.

PRESSURE REGULATOR

code	description	€
A19511100	Manual SS pressure regulator Pressure range 0-7 bar Maximum pressure 10 bar	
A19513100	Manual SS pressure regulator Pressure range 0-60 bar Maximum pressure 70 bar	



code	description	€
A19515100	Automatic SS pressure regulator 1:1 ratio Pressure range 0-7 bar Maximum pressure 10 bar	



code	description	€
FPR103050	Automatic SS pressure regulator 3:1 ratio Pressure range 0-15 bar Maximum pressure 20 bar	
FPR105050	Automatic SS pressure regulator 5:1 ratio Pressure range 0-30 bar Maximum pressure 40 bar	



PIPES

low pressure pipes

code	description	€/mt
TBP010407	Blue pipe Ø 6x4	
TBP010609	Blue pipe Ø 8x6	
TBP011008	Blue pipe Ø 10x8	
TBP010913	Blue pipe Ø 12x10	



code	description	€/mt
TBP050407	Transparent pipe Ø 6x4	
TBP050609	Transparent pipe Ø 8x6	
TBP050811	Transparent pipe Ø 10x8	
TBP050913	Transparent pipe Ø 12x10	



high pressure pipes

code	description	€
TBR010120	High pressure pipe G1/8 with fittings L=2 m	
TBR010130	High pressure pipe G1/8 with fittings L=3 m	
TBR010140	High pressure pipe G1/8 with fittings L=4 m	
TBR010150	High pressure pipe G1/8 with fittings L=5 m	

code	description	€
TBR010220	High pressure pipe G1/4 with fittings L=2 m	
TBR010230	High pressure pipe G1/4 with fittings L=3 m	
TBR010240	High pressure pipe G1/4 with fittings L=4 m	
TBR010250	High pressure pipe G1/4 with fittings L=5 m	

code	description	€
TBR010320	High pressure pipe G3/8 with fittings L=2 m	
TBR010330	High pressure pipe G3/8 with fittings L=3 m	
TBR010340	High pressure pipe G3/8 with fittings L=4 m	
TBR010350	High pressure pipe G3/8 with fittings L=5 m	

code	description	€
TBR010520	High pressure pipe G1/2 with fittings L=2	
TBR010530	High pressure pipe G1/2 with fittings L=3	
TBR010540	High pressure pipe G1/2 with fittings L=4	
TBR010550	High pressure pipe G1/2 with fittings L=5	



On request it is possible to have lengths greater than those indicated.

FILTERS

code	description	€
K95518600	SS pulsation dampener filter G1/2 with cartridge 50 mesh/300 µm Maximum pressure 250 bar	
K95518601	SS pulsation dampener filter G1/2 with cartridge 200 mesh/75 µm Maximum pressure 250 bar	



code	description	€
FLT205100	SS Y Filter G1/2 with cartridge 100 mesh/150 µm Maximum pressure 100 bar	



code	description	€
MZF1138	Pulsation dampener filter G3/8 1 IN- 1 OUT same side 100 mesh/150 µm	
MZF1138S	Pulsation dampener filter G3/8 1 IN- 1 OUT opposite sides 100 mesh/150 µm	
MZF2314	Pulsation dampener filter G1/4 2 IN- 3 OUT opposite sides 100 mesh/150 µm	



code	description	€
FLC030050	Filter cartridge (K95518600) 50 mesh/300 µm	
FLC030200	Filter cartridge (K95518601) 200 mesh/75 µm	



code	description	€
FLC020100	Y filter cartridge (FLT205100) 100 mesh/150 µm	

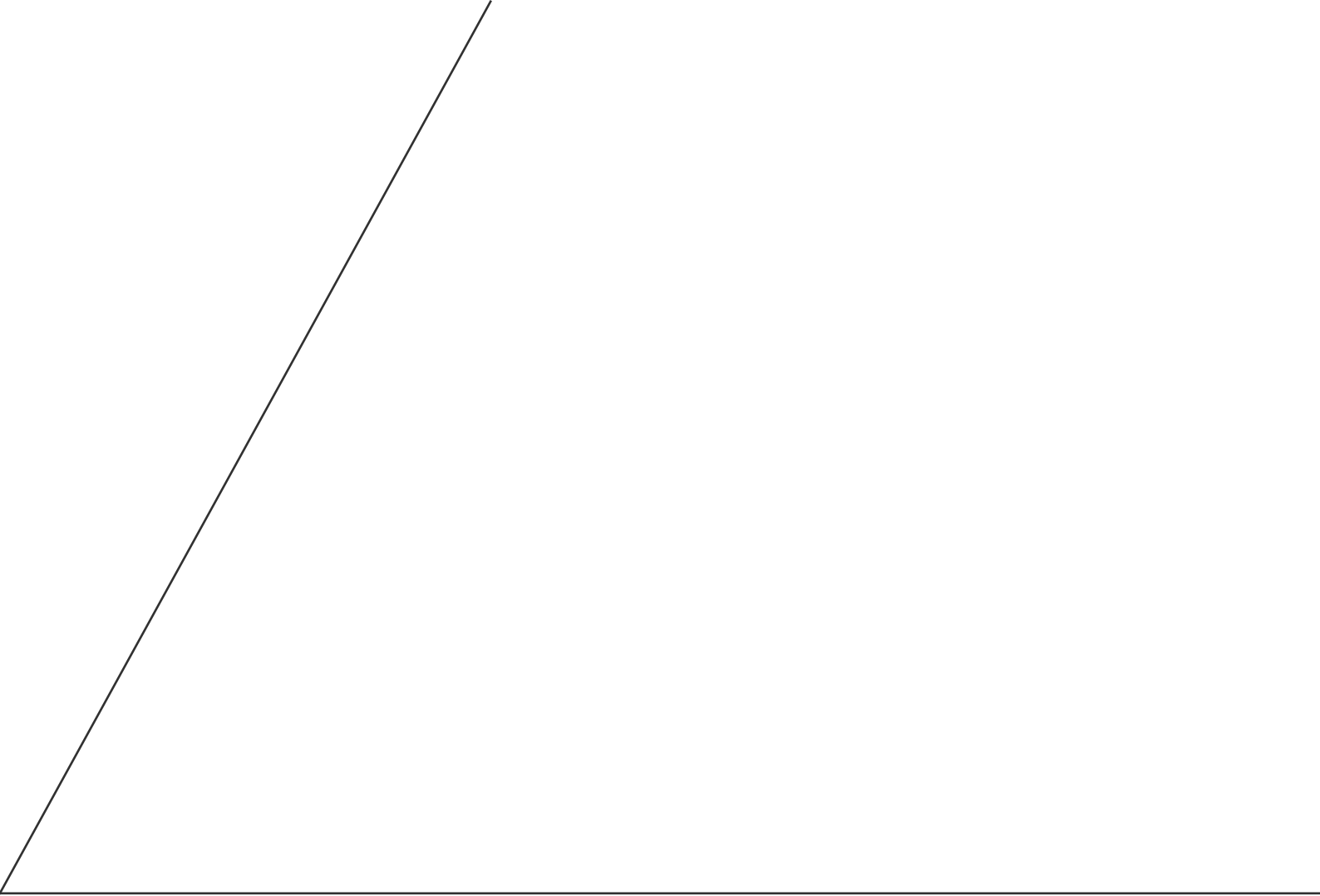


code	description	€
FLC010150	Filter cartridge (MZF) 100 mesh/150 µm	



code	description	€
FLT000010	Bottom valve filter cartridge	





All images and data in this catalogue
are considered for illustration only.
The company reserves the right to make changes without notice.

Names, trademarks and logos are property of the author.

Other components MAY 2023_V01

ZATOR SRL

Via Galvani, 11
20095 Cusano Milanino (MI)
Italy

Tel. +39 02 66403235
Fax +39 02 66403215

info@zator.it
www.zator.it

