



Zator
gluing solutions

 2024
other
components



ANNIVERSARY
1998 - 2023

welcome



ZATOR SRL

Via Galvani, 11
20095 Cusano Milanino (MI)
Italy

Tel. +39 02 66403235

Fax +39 02 66403215

info@zator.it

www.zator.it

Index

OTHER COMPONENTS	7
optionals and spare parts	7
STAND STN SERIES	8
LEVEL CONTROLS	11
VALVES BRACKETS	11
GLUE DISTRIBUTOR	12
VALVE KIT	14
ENCODER	18
PHOTOCELLS	19
CABLES	20
PRESSURE REGULATOR	21
PIPES	22
FILTERS	24



OTHER COMPONENTS

optionals and spare parts

Zator's optionals and spare parts are those components that complete a typical glue, adhesive and fluid application/distribution system.

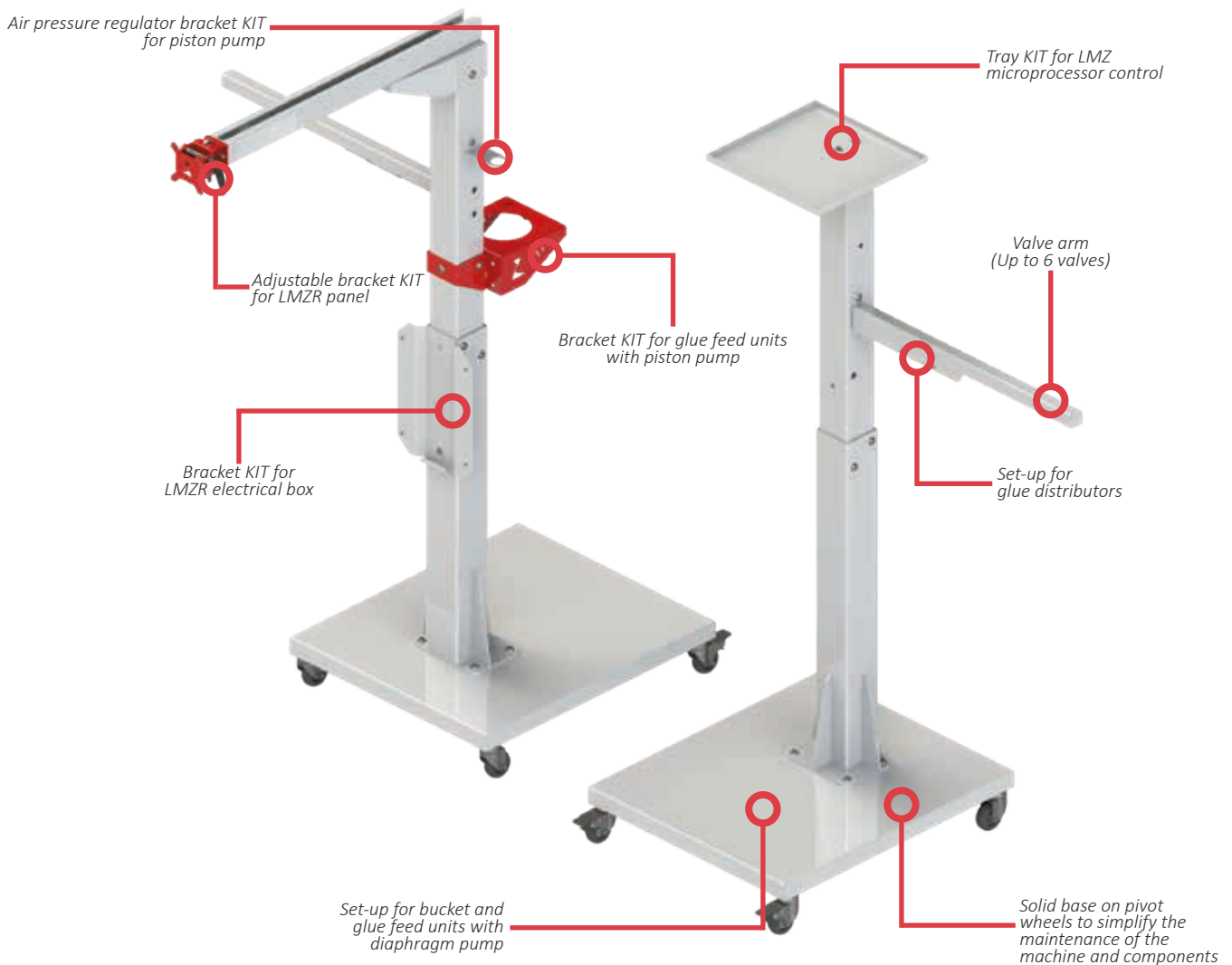
They are divided in optionals and spare parts for the supply and fluid control in the system and in optionals and spare parts for the electronic control of the solenoid valves.

OPTIONALS AND SPARE PARTS

stand STN series	photocells
level controls	cables
valve brackets	pressure regulators
glue distributors	pipes
valve kit	filters
encoder	

STAND STN SERIES

The stand of STN series has been designed specifically to adapt and integrate with the most folder-gluer machines and similar machines, giving a solid, safe and handy bracket system for adhesive, glue and fluid application components. The STN series can be equipped with different KIT available for the customer.



base kit

code	description
------	-------------

STN00100	Standard stand kit
----------	--------------------



additional kit

code	description
------	-------------

TRY00100	Tray kit for stand STN00100
----------	--------------------------------

TRY00200	Tray kit for arm BRC00100
----------	------------------------------

BRC001330	Tray for LMZ microprocessor control
-----------	--



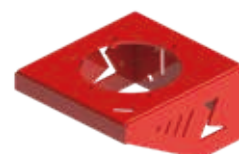
code	description
------	-------------

BRC00400	5:1 piston pump bracket kit for stand STN00100
----------	---

SP20001	5:1 piston pump wall mount bracket
---------	---------------------------------------

BRK001050	2:1 piston pump bracket kit for stand STN00100
-----------	---

BRK001051	2:1 piston pump wall mount bracket
-----------	---------------------------------------



code	description
------	-------------

BRC00600	Air pressure regulator bracket kit
----------	---------------------------------------



code	description
------	-------------

BRC00300	Adjustable bracket kit for remote control panel
----------	--



<u>code</u>	<u>description</u>
-------------	--------------------

BRC00100	Fixed arm kit for STN00100 Total length 680mm
----------	--



<u>code</u>	<u>description</u>
-------------	--------------------

BRC00500	Bracket kit for LMZ04R electrical box
----------	--

BRC00510	Bracket kit for LMZ08R electrical box
----------	--



LEVEL CONTROLS

code	description
A19910000	Float level sensor kit
KCN001435	Level signal lamp kit with 5m cable
KCN001445	Level signal lamp kit with bracket and 5m cable



VALVES BRACKETS

code	description
H89300100	Valve bracket kit DLK22 bar 45 mm
H89300400	Valve bracket kit DLK22 bar 20-32 mm
BRK001352	Valve bracket kit VH2 bar 45 mm
BRK001351	Valve bracket kit VH2 bar 20-32 mm
H89300601	Valve bracket kit M5 bar 45 mm
H89300600	Valve bracket kit M5 bar 20-32 mm
BRK001371	Valve bracket kit Ø12 mm bar 45 mm
BRK001370	Valve bracket kit Ø12 mm bar 20-32 mm
H89300701	Photocell bracket kit M6 bar 45 mm
H89300700	Photocell bracket kit M6 bar 20-32 mm
BRK001391	Photocell bracket kit M18 bar 45 mm
BRK001390	Photocell bracket kit M18 bar 20-32 mm
H89335200	Photocell bracket M6



GLUE DISTRIBUTOR

low pressure glue distributors

code	description
MFDL20200	Stainless steel glue distributor Low pressure Ball valve Exhaust valve 1 pipe inlet Ø10 2 pipe outlet Ø8



code	description
MFDL30200	Stainless steel glue distributor Low pressure Ball valve Exhaust valve 1 pipe inlet Ø10 3 pipe outlet Ø8



code	description
MFDL40200	Stainless steel glue distributor Low pressure Ball valve Exhaust valve 1 pipe inlet Ø10 4 pipe outlet Ø8



code	description
MFDL60200	Stainless steel glue distributor Low pressure Ball valve Exhaust valve 1 pipe inlet Ø10 6 pipe outlet Ø8

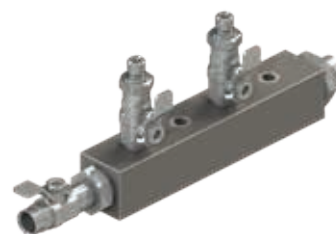


code	description
MFDL80200	Stainless steel glue distributor Low pressure Ball valve Exhaust valve 1 pipe inlet Ø10 8 pipe outlet Ø8



low pressure glue distributors

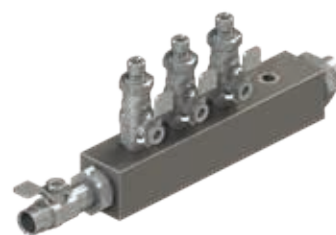
code	description
MFDH20100	Stainless steel glue distributor High pressure Ball valve - Exhaust valve 1 inlet G3/8 - 2 outlet G1/8



MFDH20200	Stainless steel glue distributor High pressure Ball valve - Exhaust valve 1 inlet G3/8 - 2 outlet G1/4
-----------	---

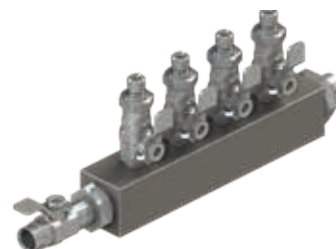
code	description
MFDH30100	Stainless steel glue distributor High pressure Ball valve - Exhaust valve 1 inlet G3/8 - 3 outlet G1/8

MFDH30200	Stainless steel glue distributor High pressure Ball valve - Exhaust valve 1 inlet G3/8 - 3 outlet G1/4
-----------	---



code	description
MFDH40100	Stainless steel glue distributor High pressure Ball valve - Exhaust valve 1 inlet G3/8 - 4 outlet G1/8

MFDH40200	Stainless steel glue distributor High pressure Ball valve - Exhaust valve 1 inlet G3/8 - 4 outlet G1/4
-----------	---



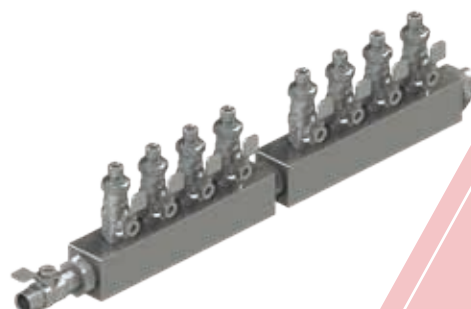
code	description
MFDH60100	Stainless steel glue distributor High pressure Ball valve - Exhaust valve 1 inlet G3/8 - 6 outlet G1/8

MFDH60200	Stainless steel glue distributor High pressure Ball valve - Exhaust valve 1 inlet G3/8 - 6 outlet G1/4
-----------	---



code	description
MFDH80100	Stainless steel glue distributor High pressure Ball valve - Exhaust valve 1 inlet G3/8 - 8 outlet G1/8

MFDH80200	Stainless steel glue distributor High pressure Ball valve - Exhaust valve 1 inlet G3/8 - 8 outlet G1/4
-----------	---



VALVE KIT

low pressure valve connection kit

code	description
KCN002002	Low pressure valve connection kit L=2mt for DLK16 - VH2
KCN002003	Low pressure valve connection kit L=3mt for DLK16 - VH2
KCN002004	Low pressure valve connection kit L=4mt for DLK16 - VH2
KCN002005	Low pressure valve connection kit L=5mt for DLK16 -VH2
KCN000102	Low pressure valve connection kit L=2mt for DLK22
KCN000103	Low pressure valve connection kit L=3mt for DLK22
KCN000104	Low pressure valve connection kit L=4mt for DLK22
KCN000105	Low pressure valve connection kit L=5mt for DLK22
KCN000162	Low pressure valve connection kit L=2mt for DLK22S
KCN000163	Low pressure valve connection kit L=3mt for DLK22S
KCN000164	Low pressure valve connection kit L=4mt for DLK22S
KCN000165	Low pressure valve connection kit L=5mt for DLK22S



On request it is possible to have lengths greater than those indicated.

code	description
KCN000402	Low pressure valve connection kit L=2mt for MZK- MZD- MZL
KCN000403	Low pressure valve connection kit L=3mt for MZK- MZD- MZL
KCN000404	Low pressure valve connection kit L=4mt for MZK- MZD- MZL
KCN000405	Low pressure valve connection kit L=5mt for MZK- MZD- MZL
KCN000302	Low pressure valve connection kit L=2mt for MZS
KCN000303	Low pressure valve connection kit L=3mt for MZS
KCN000304	Low pressure valve connection kit L=4mt for MZS
KCN000305	Low pressure valve connection kit L=5mt for MZS
KCN004002	Low pressure valve connection kit L=2mt for MK1
KCN004003	Low pressure valve connection kit L=3mt for MK1
KCN004004	Low pressure valve connection kit L=4mt for MK1
KCN004005	Low pressure valve connection kit L=5mt for MK1



On request it is possible to have lengths greater than those indicated.

G1/8 high pressure valve connection kit

code	description
KCN002012	G1/8 high pressure valve connection kit L=2mt for VH2
KCN002013	G1/8 high pressure valve connection kit L=3mt for VH2
KCN002014	G1/8 high pressure valve connection kit L=4mt for VH2
KCN002015	G1/8 high pressure valve connection kit L=5mt for VH2
KCN000112	G1/8 high pressure valve connection kit L=2mt for DLK22
KCN000113	G1/8 high pressure valve connection kit L=3mt for DLK22
KCN000114	G1/8 high pressure valve connection kit L=4mt for DLK22
KCN000115	G1/8 high pressure valve connection kit L=5mt for DLK22
KCN000412	G1/8 high pressure valve connection kit L=2mt for MZK- MZD- MZL
KCN000413	G1/8 high pressure valve connection kit L=3mt for MZK- MZD- MZL
KCN000414	G1/8 high pressure valve connection kit L=4mt for MZK- MZD- MZL
KCN000415	G1/8 high pressure valve connection kit L=5mt for MZK- MZD- MZL
KCN004012	G1/8 high pressure valve connection kit L=2mt for MK1
KCN004013	G1/8 high pressure valve connection kit L=3mt for MK1
KCN004014	G1/8 high pressure valve connection kit L=4mt for MK1
KCN004015	G1/8 high pressure valve connection kit L=5mt for MK1



On request it is possible to have lengths greater than those indicated.

G1/4 high pressure valve connection kit

code	description
KCN002022	G1/4 high pressure valve connection kit L=2mt for VH2
KCN002023	G1/4 high pressure valve connection kit L=3mt for VH2
KCN002024	G1/4 high pressure valve connection kit L=4mt for VH2
KCN002025	G1/4 high pressure valve connection kit L=5mt for VH2
KCN000122	G1/4 high pressure valve connection kit L=2mt for DLK22
KCN000123	G1/4 high pressure valve connection kit L=3mt for DLK22
KCN000124	G1/4 high pressure valve connection kit L=4mt for DLK22
KCN000125	G1/4 high pressure valve connection kit L=5mt for DLK22
KCN000422	G1/4 high pressure valve connection kit L=2mt for MZK- MZD- MZL
KCN000423	G1/4 high pressure valve connection kit L=3mt for MZK- MZD- MZL
KCN000424	G1/4 high pressure valve connection kit L=4mt for MZK- MZD- MZL
KCN000425	G1/4 high pressure valve connection kit L=5mt for MZK- MZD- MZL
KCN004022	G1/4 high pressure valve connection kit L=2mt for MK1
KCN004023	G1/4 high pressure valve connection kit L=3mt for MK1
KCN004024	G1/4 high pressure valve connection kit L=4mt for MK1
KCN004025	G1/4 high pressure valve connection kit L=5mt for MK1



On request it is possible to have lengths greater than those indicated.

ENCODER

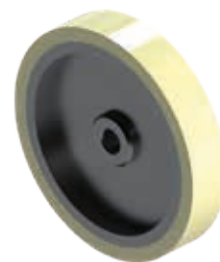
code	description
NCD641000	Encoder 1000 imp/g



code	description
BRC001450	Encoder support bracket



code	description
SFG001450	Encoder pulley



code	description
K96313194	Encoder kit: encoder 1000 imp/rev bracket pulley



PHOTOCELLS

code	description
KCN001400	Photocell kit reflex PNP high speed Ø6 with cable L=5mt



code	description
KCN001415	Photocell kit reflex PNP high speed Ø6 with cable L=5mt



code	description
KCN001425	Inductive PNP sensor kit Ø12 with cable L=5mt



On request it is possible to have lengths greater than those indicated.

CABLES

code	description
WCB325002	Valve connection cable L=2mt for DLK16- VH2
WCB325003	Valve connection cable L=3mt for DLK16- VH2
WCB325004	Valve connection cable L=4mt for DLK16- VH2
WCB325005	Valve connection cable L=5mt for DLK16- VH2
WCB322102	Valve connection cable L=2mt for DLK22
WCB322103	Valve connection cable L=3mt for DLK22
WCB322104	Valve connection cable L=4mt for DLK22
WCB322105	Valve connection cable L=5mt for DLK22
WCB322002	Valve connection cable L=2mt for MZK- MZD- MZL-MZS
WCB322003	Valve connection cable L=3mt for MZK- MZD- MZL-MZS
WCB322004	Valve connection cable L=4mt for MZK- MZD- MZL-MZS
WCB322005	Valve connection cable L=5mt for MZK- MZD- MZL-MZS
WCB322502	Valve connection cable L=2mt for MK1
WCB322503	Valve connection cable L=3mt for MK1
WCB322504	Valve connection cable L=4mt for MK1
WCB322505	Valve connection cable L=5mt for MK1



code	description
WCB323303	Encoder connection cable L=3mt
WCB323305	Encoder connection cable L=5mt
WCB32330A	Encoder connection cable L=10mt



On request it is possible to have lengths greater than those indicated.

code	description
WCB314003	Proportional valve connection cable L=3mt
WCB314005	Proportional valve connection cable L=5mt



code	description
WCB300003	Sensor level cable L=3mt
WCB300005	Sensor level cable L=5mt
WCB30000A	Sensor level cable L=10mt

On request it is possible to have lengths greater than those indicated.

PRESSURE REGULATOR

code	description
A19511100	Manual SS pressure regulator Pressure range 0-7 bar Maximum pressure 10 bar



A19513100	Manual SS pressure regulator Pressure range 0-60 bar Maximum pressure 70 bar
-----------	--

code	description
A19515100	Automatic SS pressure regulator 1:1 ratio Pressure range 0-7 bar Maximum pressure 10 bar



code	description
FPR103050	Automatic SS pressure regulator 3:1 ratio Pressure range 0-15 bar Maximum pressure 20 bar
FPR105050	Automatic SS pressure regulator 5:1 ratio Pressure range 0-30 bar Maximum pressure 40 bar



PIPES

low pressure pipes

code	description
TBP010407	Blue pipe Ø 6x4
TBP010609	Blue pipe Ø 8x6
TBP011008	Blue pipe Ø 10x8
TBP010913	Blue pipe Ø 12x10



code	description
TBP050407	Transparent pipe Ø 6x4
TBP050609	Transparent pipe Ø 8x6
TBP050811	Transparent pipe Ø 10x8
TBP050913	Transparent pipe Ø 12x10



high pressure pipes

code	description
TBR010120	High pressure pipe G1/8 with fittings L=2 m
TBR010130	High pressure pipe G1/8 with fittings L=3 m
TBR010140	High pressure pipe G1/8 with fittings L=4 m
TBR010150	High pressure pipe G1/8 with fittings L=5 m

code	description
TBR010220	High pressure pipe G1/4 with fittings L=2 m
TBR010230	High pressure pipe G1/4 with fittings L=3 m
TBR010240	High pressure pipe G1/4 with fittings L=4 m
TBR010250	High pressure pipe G1/4 with fittings L=5 m

code	description
TBR010320	High pressure pipe G3/8 with fittings L=2 m
TBR010330	High pressure pipe G3/8 with fittings L=3 m
TBR010340	High pressure pipe G3/8 with fittings L=4 m
TBR010350	High pressure pipe G3/8 with fittings L=5 m

code	description
TBR010520	High pressure pipe G1/2 with fittings L=2 m
TBR010530	High pressure pipe G1/2 with fittings L=3 m
TBR010540	High pressure pipe G1/2 with fittings L=4 m
TBR010550	High pressure pipe G1/2 with fittings L=5 m



On request it is possible to have lengths greater than those indicated.

FILTERS

code	description
K95518600	SS pulsation dampener filter G1/2 with cartridge 50 mesh/300 µm Maximum pressure 250 bar
K95518601	SS pulsation dampener filter G1/2 with cartridge 200 mesh/75 µm Maximum pressure 250 bar



code	description
FLT205100	SS Y Filter G1/2 with cartridge 100 mesh/150 µm Maximum pressure 100 bar



code	description
MZF1138	Pulsation dampener filter G3/8 1 IN- 1 OUT same side 100 mesh/150 µm
MZF1138S	Pulsation dampener filter G3/8 1 IN- 1 OUT opposite sides 100 mesh/150 µm
MZF2314	Pulsation dampener filter G1/4 2 IN- 3 OUT opposite sides 100 mesh/150 µm



code	description
FLC030050	Filter cartridge (K95518600) 50 mesh/300 µm



code	description
FLC020100	Y filter cartridge (FLT205100) 100 mesh/150 µm



code	description
FLC010150	Filter cartridge (MZF) 100 mesh/150 µm



code	description
FLT000010	Bottom valve filter cartridge





All images and data in this catalogue
are considered for illustration only.
The company reserves the right to make changes without notice.

Names, trademarks and logos are property of the author.

Other components February 2024_V01

ZATOR SRL

registered office

Via Agostino Bertani 2
20154 Milano
Italia

head office

Via Galvani, 11
20095 Cusano Milanino (MI)
Italia

Tel. +39 02 66403235

Fax +39 02 66403215

info@zator.it

www.zator.it

